

BLAXLAND 30

SPLIT LEVEL DESIGN SERIES



CLASSIC

HOME FEATURES

TOTAL AREA	286 m²
HOUSE WIDTH	12.5 m
HOUSE LENGTH	22.45 m

Family	4.2 x 6.1 m
Meals	3.6 x 6.1 m
Living	5.1 x 5.3 m
Master Bedroom	4.8 x 3.9 m
Bedroom 2	3.6 x 3 m
Bedroom 3	3.6 x 3 m
Bedroom 4	3.3 x 3 m
Garage	7.1 x 6 m

Compact living with an abundance of style!

The Blaxland 30 is perfect for sloping lots. Consisting of a split-level design, this well laid out home provides 4 good sized bedrooms including an oversized master suite, along with 2.5 bathrooms, separate living area and an open plan kitchen/family/dining area. Everything you need in a home packaged together into a thoughtfully designed layout.

OTHER DETAILS

Sizes Available

30

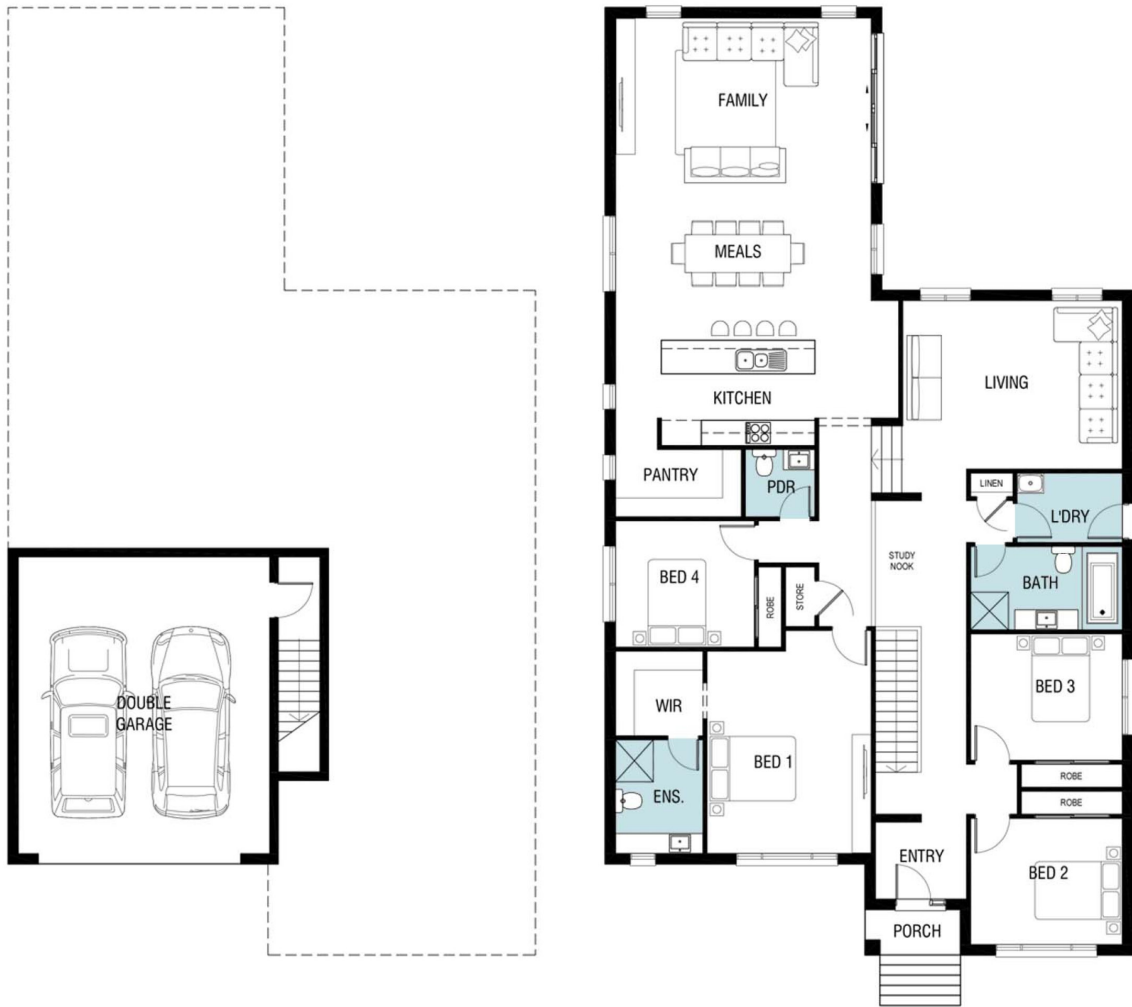
Facades Available

Classic

Suitable For

Sloping Blocks

Non-Standard Lots



CLASSIC

Photographs and artist impressions are indicative only. They may include upgraded features above the standard inclusions such as, but not limited to; feature render, feature tiling, stack stone, landscaping, floor finishes, window furnishings, furniture, light fittings and decor items. Please refer to the standard inclusions for details or speak with a New South Homes sales representative for more information. November 2020 v.1 Copyright All rights reserved. New South Homes Pty Ltd Builders License Number: 319502C.