

CLIFTON 18

DOUBLE STOREY DESIGN SERIES



HOME FEATURES

TOTAL AREA	174 m²
HOUSE WIDTH	8.9 m
HOUSE LENGTH	10.3 m

Living	4.1 x 5.3 m
Dining	3.6 x 4.2 m
Master Bedroom	4 x 3.6 m
Bedroom 2	3.4 x 3 m
Bedroom 3	3 x 3 m
Bedroom 4	3 x 2.8 m
Garage	5.5 x 3 m

Smaller lot, still big living!

The Clifton 18 is the baby brother of the Clifton 20, but if you think smaller means compromising on style, you can think again. The Clifton 18 has retained all the great features of the Clifton 20, but with one small adjustment. A single garage has been added in lieu of a double garage. This allows for a perfect fit on smaller lots. One garage or two... The choice is yours.

OTHER DETAILS

Sizes Available

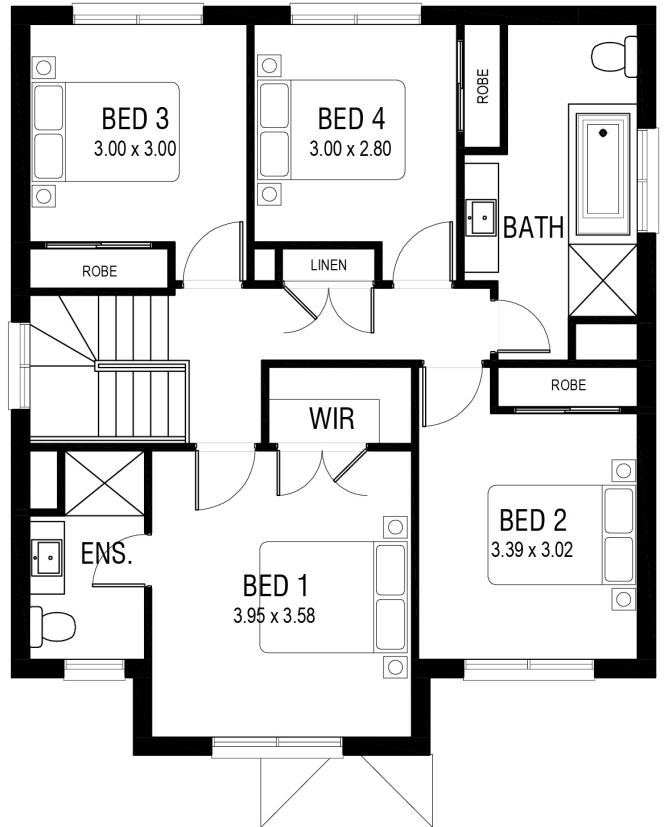
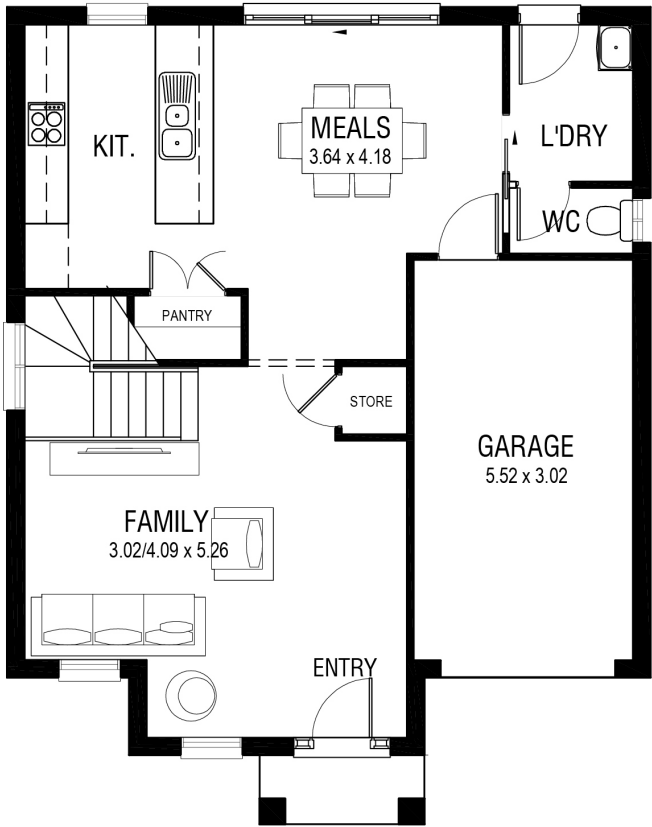
18, 20, 24

Suitable For

Growing Families
Multi-Generational
Households

Facades Available

Bentley
Classic
Coastal
Impala
Panorama



Photographs and artist impressions are indicative only. They may include upgraded features above the standard inclusions such as, but not limited to; feature render, feature tiling, stack stone, landscaping, floor finishes, window furnishings, furniture, light fittings and decor items. Please refer to the standard inclusions for details or speak with a New South Homes sales representative for more information. November 2020 v.1 Copyright All rights reserved. New South Homes Pty Ltd Builders License Number: 319502C.