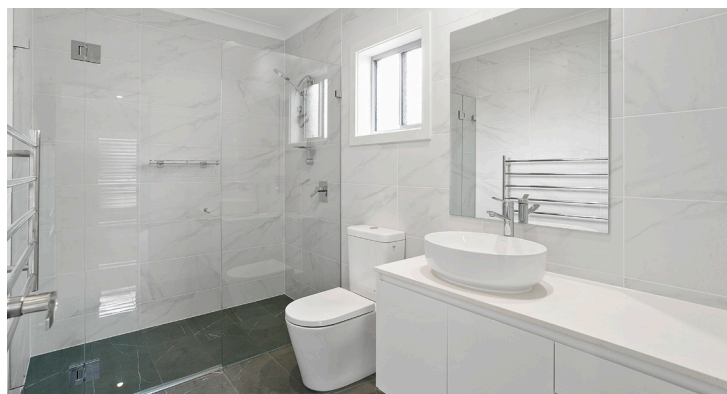
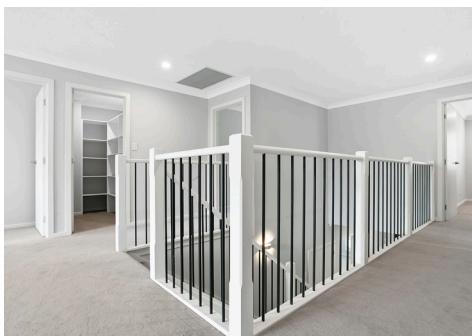


FORESTVILLE M12



DOUBLE STOREY HOME & GRANNY FLAT



- Brick veneer and render facade
- Concrete Roof tiles in the Elabana profile
- Double lock-up Garage
- 5 Large Bedrooms, all with walk-in wardrobes
- Designer Kitchen with 40mm stone benchtop, glass splashback, Smeg appliances & a large Walk-In Pantry
- Bathroom with floor-to-ceiling wall tiles & wall-hung vanities
- Covered Outdoor Alfresco
- LED Downlights Throughout, Ducted Air Conditioning, Video Intercom & Security System
- 60m2 Granny Flat with attached Garage: 2 Bedrooms, 1 Powder Room & Bathroom with Laundry and single Garage

FLOOR PLAN MOSMAN 35

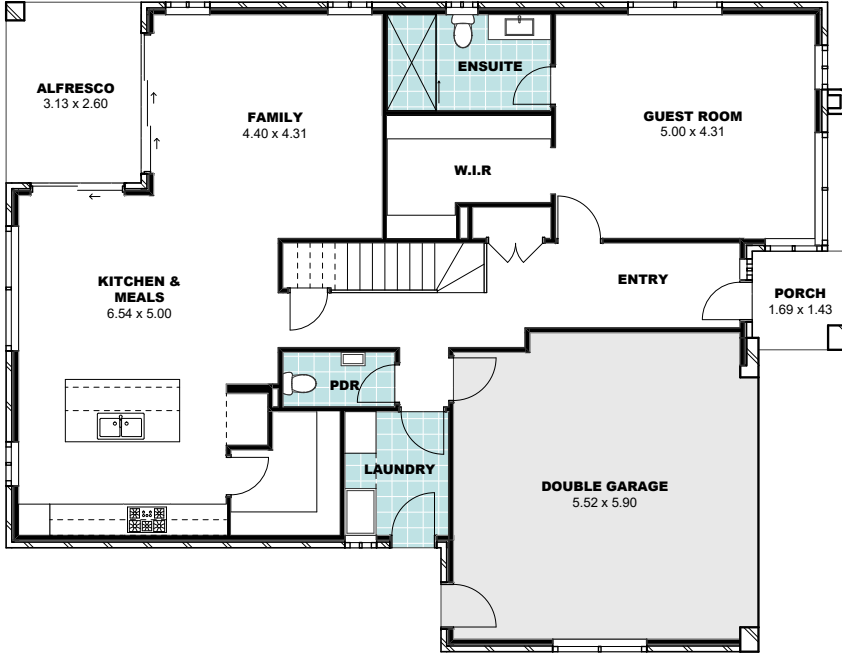
LOT WIDTH 18.9m

TOTAL AREA 312.4m²

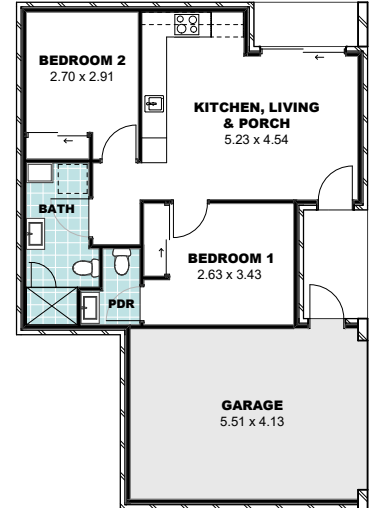
HOUSE WIDTH 12.5m

HOUSE LENGTH 15.8m

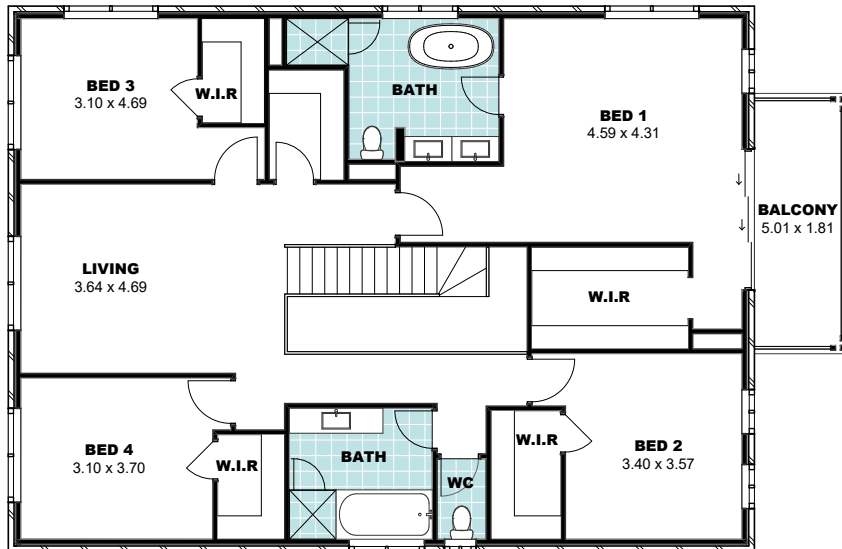
HOUSE - GROUND FLOOR



GRANNY FLAT - GROUND FLOOR



HOUSE - FIRST FLOOR



SITE PLAN

