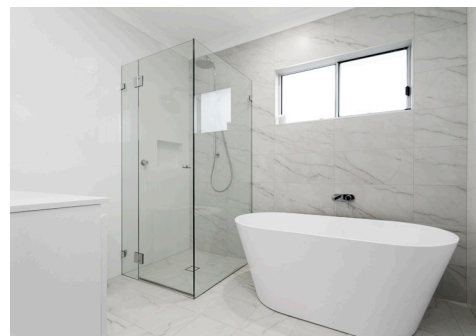
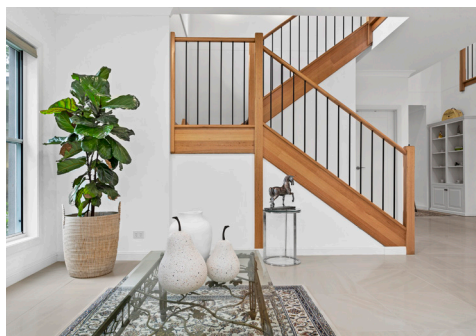
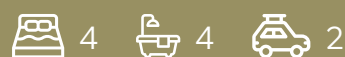


HORNSBY B3



DOUBLE STOREY HOME



- Hamptons façade and aluminium balustrades
- Bedrooms with walk-in wardrobes
- Large Kitchen with 40mm stone benchtop, 1200mm deep island with rear cabinetry, polyurethane cabinetry, undermount double-bowl sink, Pheonix Radii sink mixer, Westinghouse appliances and externally ducted rangehood.
- Laundry with custom cabinetry and stone benchtop
- Bathrooms with semi-frameless shower screens, overhead shower rose, shaving cabinets, and Piccolo 1500 Bathtub
- Victorian Ash staircase, feature wall niches and 92x18mm skirting, underfloor heating
- TV Antenna
- Air conditioner and LED downlights throughout

FLOOR PLAN CUSTOM DESIGN

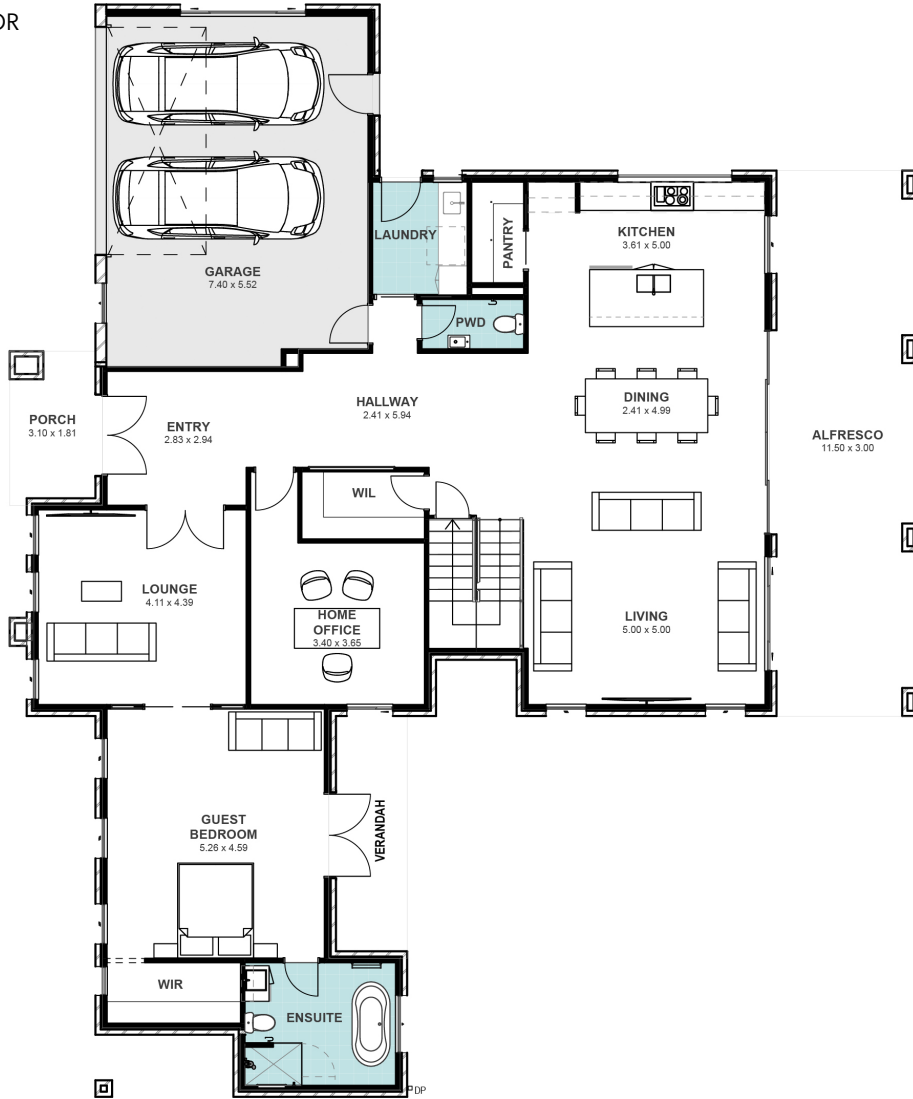
LOT SIZE 932m²

TOTAL AREA 453m²

HOUSE WIDTH 22m

HOUSE LENGTH 19.2m

GROUND FLOOR



FIRST FLOOR

