



MOSMAN 35

DOUBLE STOREY DESIGN SERIES

COASTAL

Step inside this entertainer's delight and fall in love with your new life!

The two-storey Mosman 35 provides creature comforts on all levels. Walk-in-robos to all bedrooms, two walk-in-linen cupboards and an extra-large walk-in-pantry means you will never run out of storage. Add oversized bedrooms and four living areas and you have the perfect home for a growing family.

See more facades on our website!



CLASSIC



IMPALA

Mosman 35



5



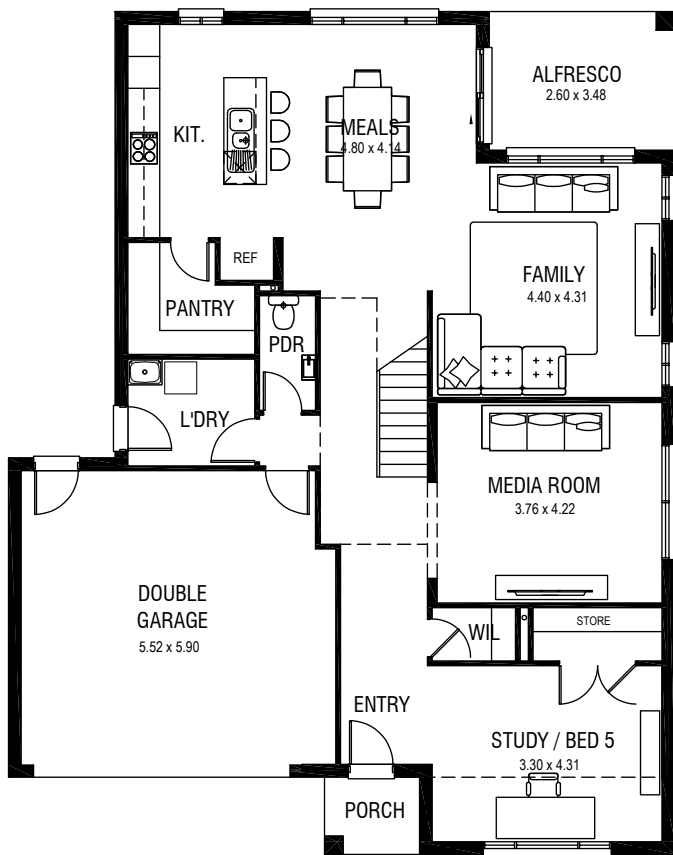
2.5



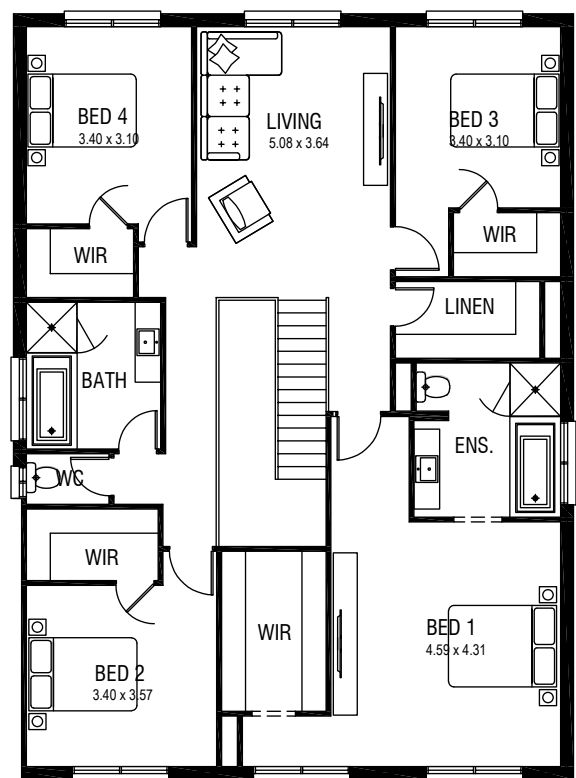
2

Total Area	322m ²	Width	12.5m	Length	15.8m	Minimum Lot Width	15m
-------------------	-------------------	--------------	-------	---------------	-------	--------------------------	-----

Ground Floor	125m ²
First Floor	150m ²
Garage	35m ²
Porch	3m ²
Alfresco	9m ²



GROUND FLOOR



FIRST FLOOR