

# MOSMAN 35

DOUBLE STOREY DESIGN SERIES



CLASSIC

## HOME FEATURES

<b>TOTAL AREA</b>	<b>322 m<sup>2</sup></b>
<b>HOUSE WIDTH</b>	<b>12.5 m</b>
<b>HOUSE LENGTH</b>	<b>15.8 m</b>
<b>Family</b>	4.4 x 4.3 m
<b>Dining</b>	4.8 x 4.3 m
<b>Media Room</b>	3.8 x 4.2 m
<b>Master Bedroom</b>	4.6 x 4.3 m
<b>Bedroom 2</b>	3.4 x 3.6 m
<b>Bedroom 3</b>	3.4 x 3.1 m
<b>Bedroom 4</b>	3.4 x 3.1 m
<b>Bedroom 5/ Study</b>	3.3 x 4.3 m
<b>Garage</b>	5.5 x 5.9 m

Step inside this entertainer's delight and fall in love with your new life!

The two-storey Mosman 35 provides creature comforts on all levels. Walk-in-robos to all bedrooms, two walk-in-linen cupboards and an extra-large walk-in-pantry means you will never run out of storage. Add oversized bedrooms and four living areas and you have the perfect home for a growing family.

## OTHER DETAILS

### Sizes Available

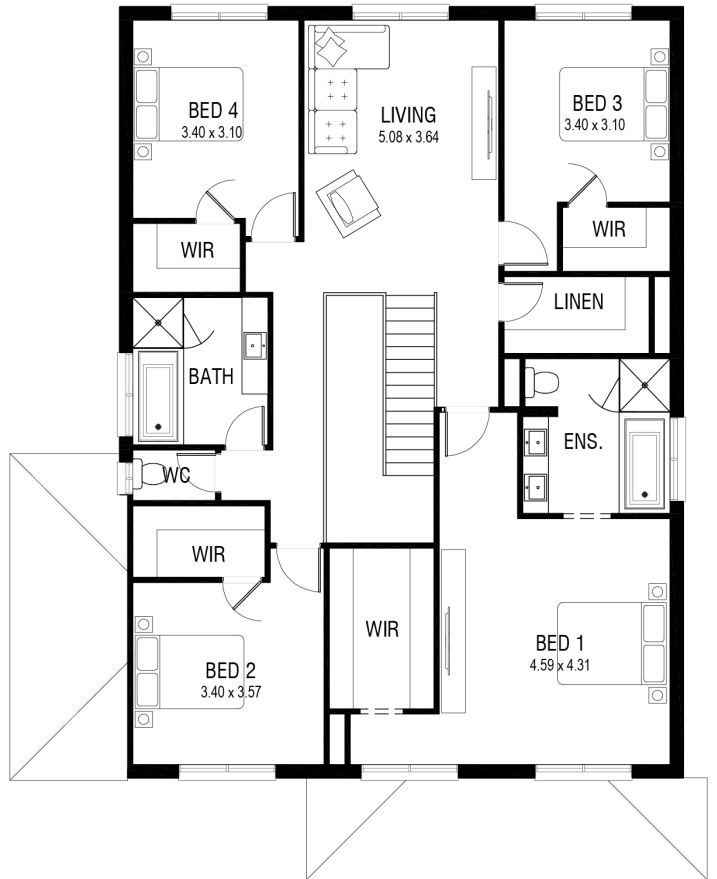
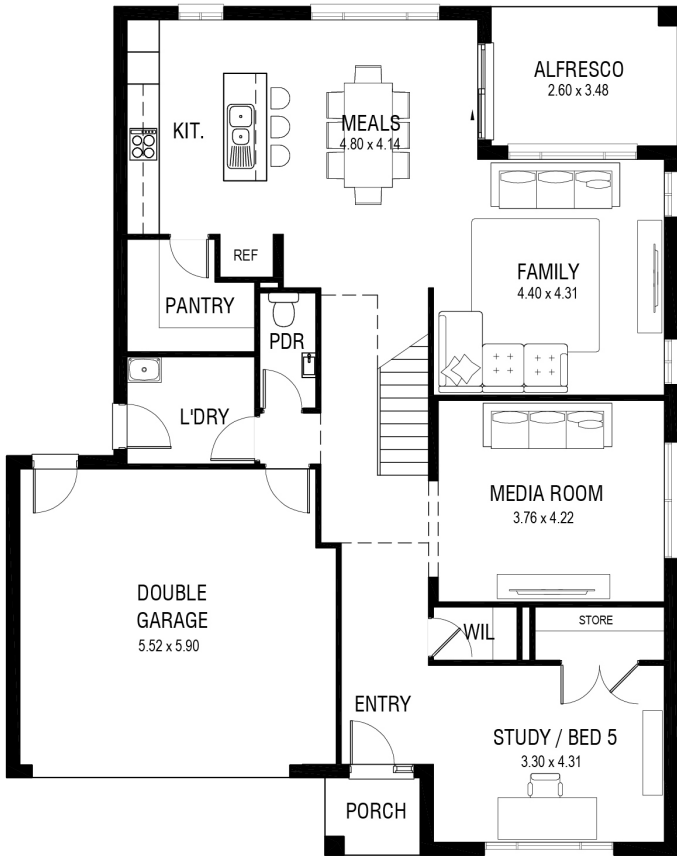
35, 35mkII

### Suitable For

Growing Families  
Multi-Generational Households

### Facades Available

Classic  
Coastal  
Impala  
Opulent  
Panorama  
Plantation



Photographs and artist impressions are indicative only. They may include upgraded features above the standard inclusions such as, but not limited to; feature render, feature tiling, stack stone, landscaping, floor finishes, window furnishings, furniture, light fittings and decor items. Please refer to the standard inclusions for details or speak with a New South Homes sales representative for more information. November 2020 v.1 Copyright All rights reserved. New South Homes Pty Ltd Builders License Number: 319502C.