

# WESTMEAD M1



## DOUBLE STOREY HOME



- Brick facade exterior with render feature walls.
- 4 Bedrooms, with large walk-in wardrobe and Ensuite to Master, and built-in wardrobes to remaining.
- Timber-look vinyl flooring to Living, Kitchen and Hallways, Carpet to Bedrooms. Staircase with American Oak veneer treads, timber and steel balustrade.
- Ducted air conditioning throughout.
- Designer Kitchen featuring 20mm stone benchtop with waterfall edge and pendant lights above, two-toned polyurethane cabinetry, canopy rangehood, double undermount sink, gooseneck mixer and Butlers Pantry.
- Full-height tiling to all Bathrooms, brick-bond pattern wall tiles and herringbone floor tiles.
- Spacious Guest Bedroom and Living area with wet bar.

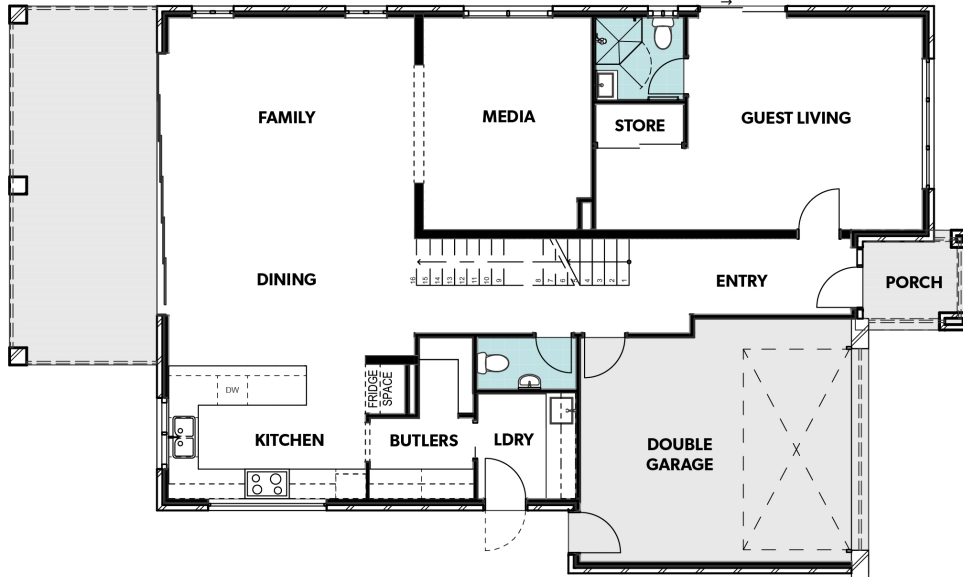
# FLOOR PLAN MOSMAN 35

LOT SIZE 436m<sup>2</sup>

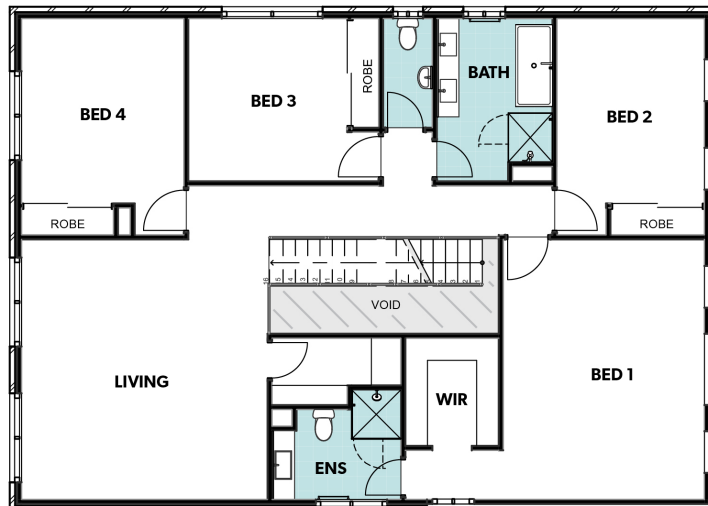
TOTAL AREA 333m<sup>2</sup>

HOUSE WIDTH 11.7m

HOUSE LENGTH 19.5m



GROUND FLOOR



FIRST FLOOR