

BAYVIEW 31

DOUBLE STOREY DESIGN SERIES



COASTAL

HOME FEATURES

TOTAL AREA	288 m²
HOUSE WIDTH	11 m
HOUSE LENGTH	17.4 m
Family	6.1 x 4.1 m
Meals	4.1 x 3.1 m
Master Bedroom	4.9 x 4.1 m
Bedroom 2	3.5 x 3 m
Bedroom 3	3.5 x 3 m
Bedroom 4	3.26 x 3 m
Bedroom 5/ Study	3.8 x 3.4 m
Media	4.1 x 3.4 m
Upstairs Living	5.3 x 3.3 m
Garage	5.5 x 5.5 m

Hello entertainers delight!

The Bayview 31 is luxury living on a grand scale. Need an office to work from home? You got it! Want a home theatre room to watch movies style? There's one included. After extra living upstairs for extra peace and quiet? We've included that too! Not to mention five well-appointed bedrooms, two generous bathrooms and a separate laundry. Where else will you find a home that provides extra living space while still being able to fit on a 12.5 metre frontage with zero lot line?

OTHER DETAILS

Sizes Available

31

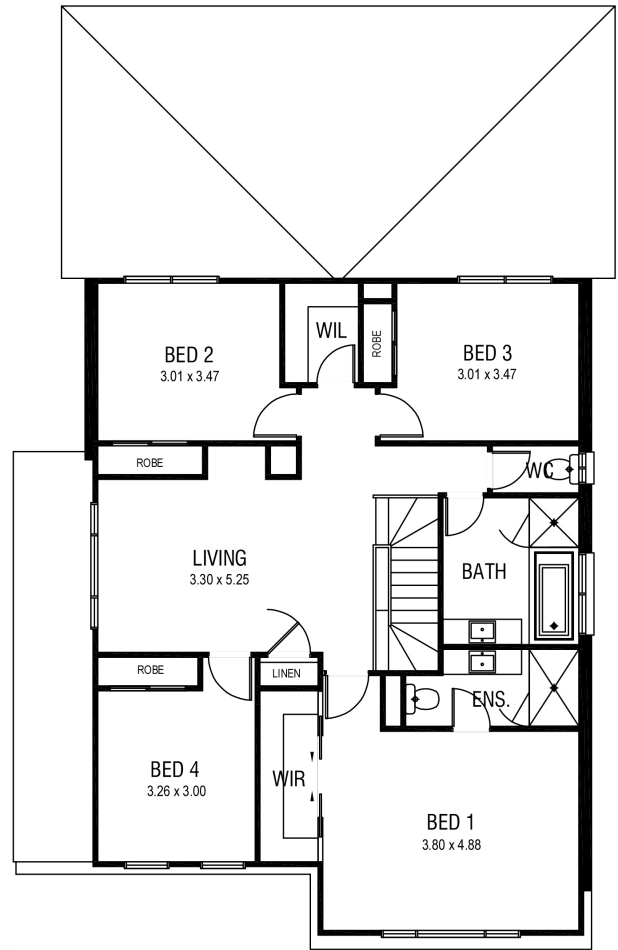
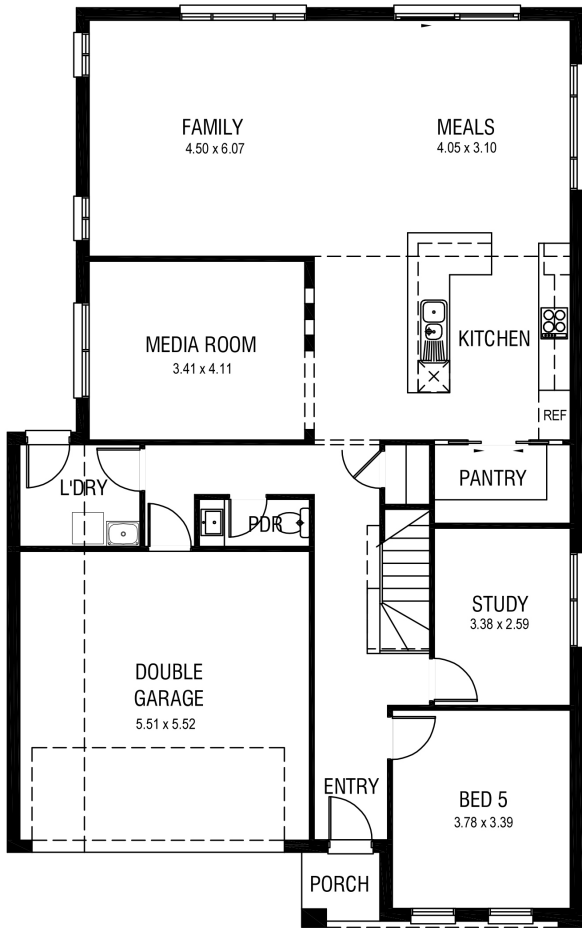
Facades Available

Coastal

Suitable For

Growing Families

Multi-Generational Families



COASTAL

Photographs and artist impressions are indicative only. They may include upgraded features above the standard inclusions such as, but not limited to; feature render, feature tiling, stack stone landscaping floor finishes, window furnishings, furniture, light fittings and decor items. Please refer to the standard inclusions for details or speak with a New South Homes sales representative for more information. November 2020 v.1 Copyright All rights reserved. New South Homes Pty Ltd Builders License Number: 319502C.